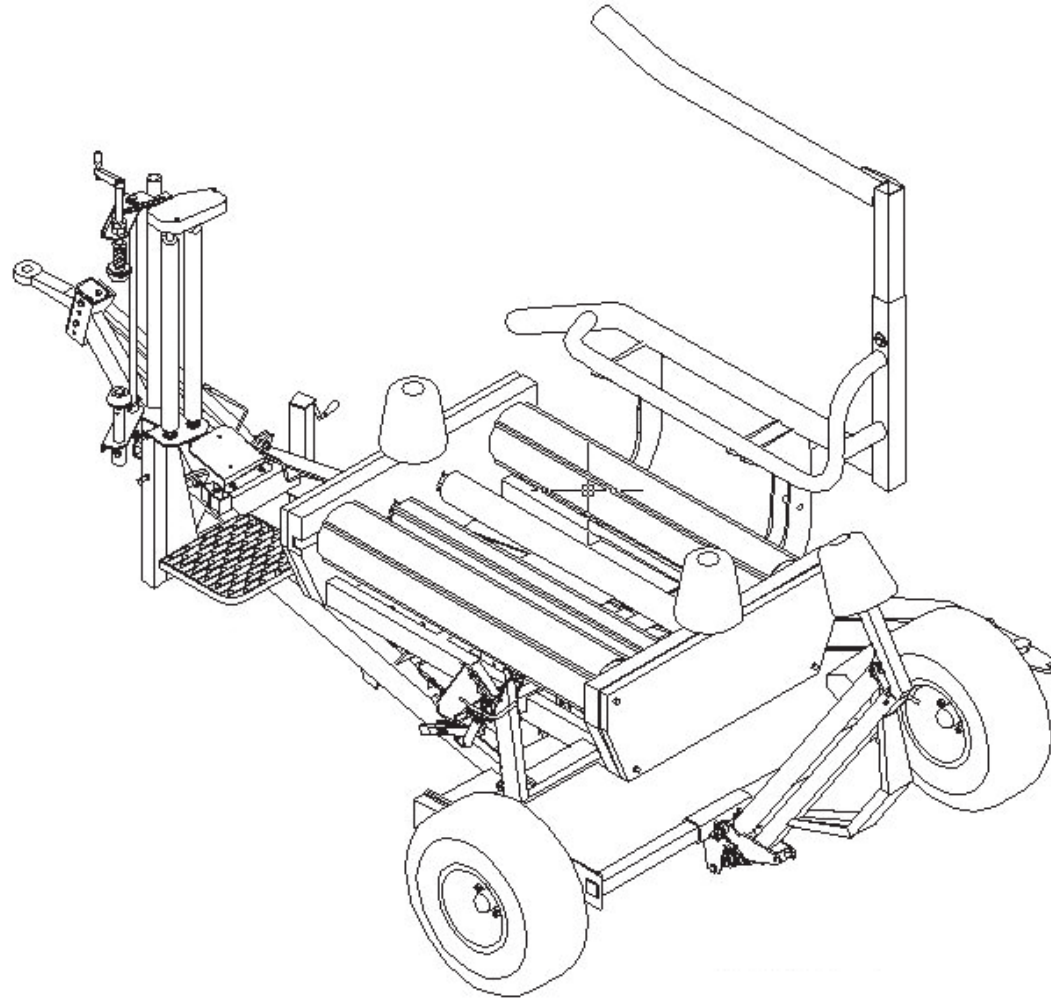


**SPARE PARTS CATALOGUE
SELF-LOADING BALE WRAPPER
Z-577 „Sokół“**



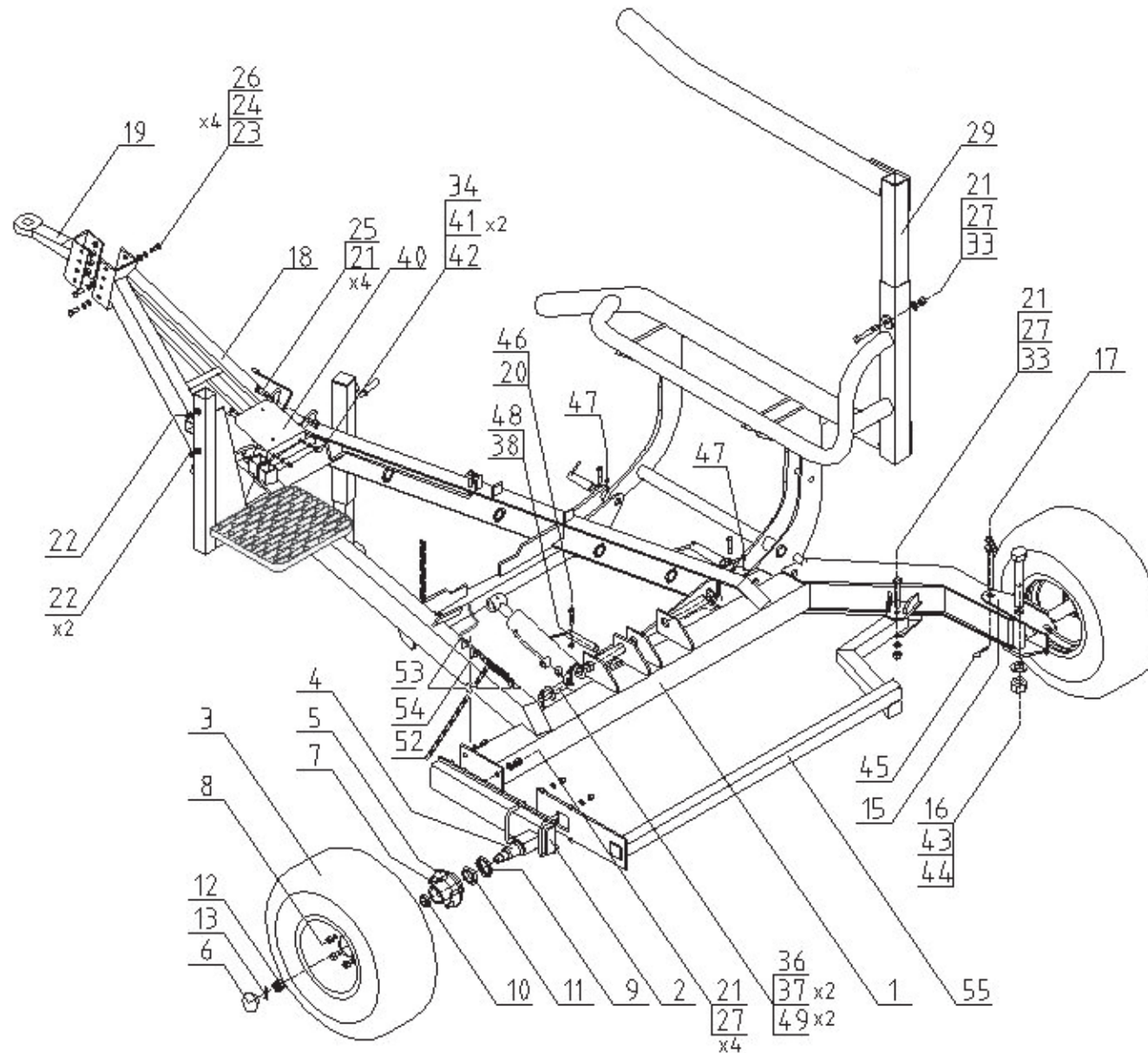
Sokółka 20.....

LIST OF CATALOGUE ITEMS

No.	Table title	Page number
1.	Complete lower frame	3
2.	Wrapping film feeder	9
3.	Movable frame	13
4.	Complete rotary frame	17
5.	Hydraulic system	25
6.	* Attachment for vertical bale positioning	29

(*) - available on customer's request

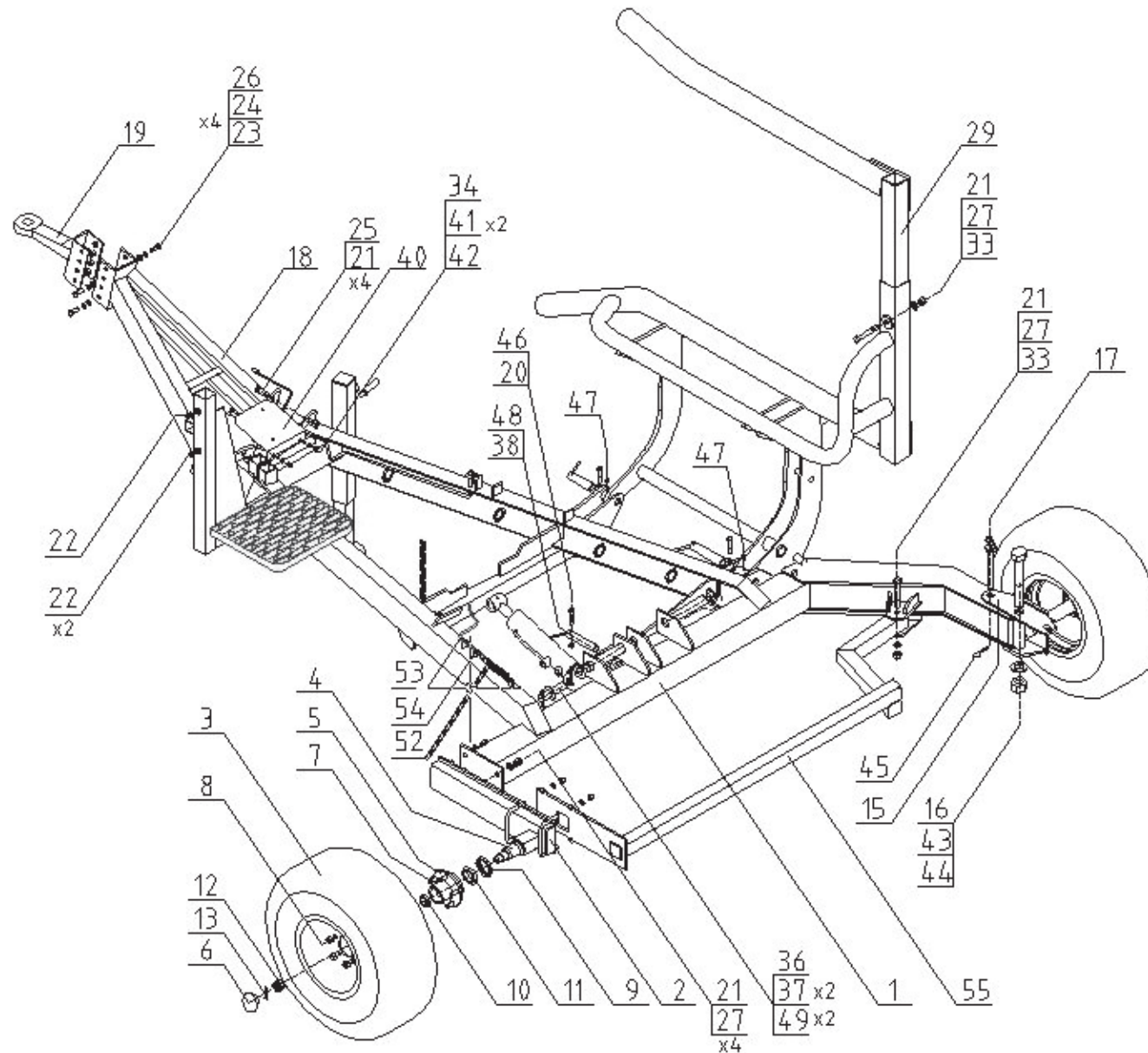
Lower frame, set -1/2



LOWER FRAME, SET 1/3

No. in dwg	Assembly or part description	Drawing no. or standard	Quantity
1	Main frame	Z 577 – 01.00.00	1
2	Wheel bracket, set	Z 577 – 01.00.05	1
3	Wheel, complete	10x80-12 10PR	2
4	Axle shaft	S50JAO500 L – 200	2
5	Hub	5/94/140	2
6	Hub cover		2
7	Pin, M16x1.5x50 8.8, with nut	PN/S – 91240.62	10
8	Nut, M16 8 –B (for a pin)		10
9	Sealing ring, 915PG45	85x45x3	2
10	Cone bearing, 30206A	PN – ISO 355:1997	2
11	Cone bearing, 30209A	PN – ISO 355:1997	2
12	Hub nut, M24	PN/M – 82148	2
13	Hub cotter pin Ø3	PN/M – 82001	2
14	Complete adjustable foot	Z 237 – 00.28.00	1
15	Rotation axle shaft	Z 577 – 01.06.00	1
16	Bolt, M36x220 8.8 – B	PN/M – 82101	1
17	Land wheel lock pin	Z 577 – 00.00.03	1
18	Front hitch	Z 577 – 01.03.00	1
19	Complete hitch eye	Z 577 – 01.10.00	1
20	Bolt, M10x60 5.8 – B	PN/M – 82101	5
21	Nut, M16 8 – B	PN/M – 82175	10
22	Bolt, M12x30 5.8 – B	PN/M – 82105	3
23	Plain washer Ø13	PN/M – 82005	8
24	Spring washer Ø12.2	PN/M – 82008	4

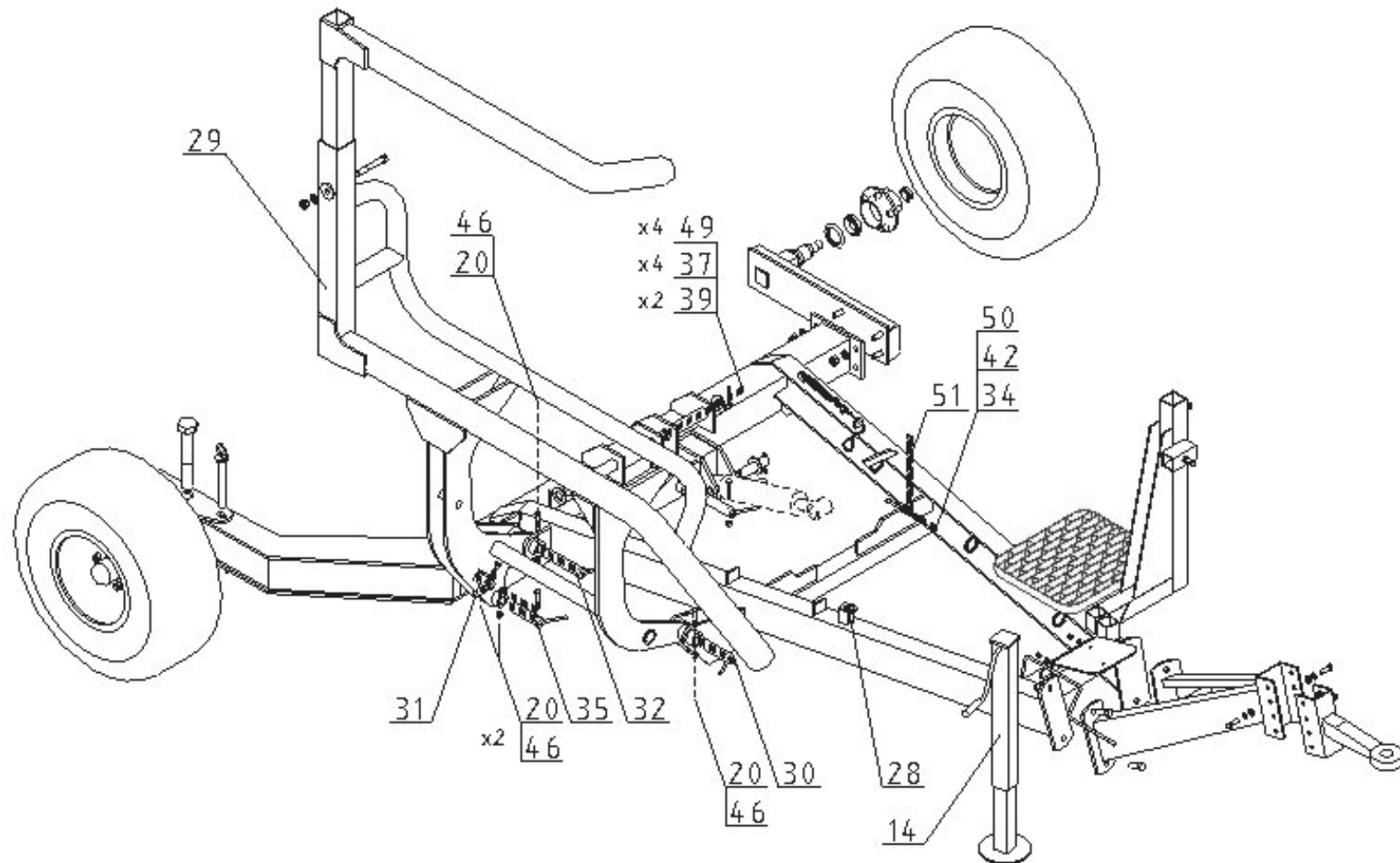
Lower frame, set -1/2



LOWER FRAME, SET 2/3

No. in dwg	Assembly or part description	Drawing no. or standard	Quantity
25	Bolt, M16x40 8.8 – B	PN/M – 82105	4
26	Bolt, M12x35 8.8 – B	PN/M – 82105	4
27	Plain washer Ø17	PN/M – 82005	6
28	Complete impulse counter with a sensor	L – 01 (domestic) L – 02 (export)	1
29	Complete loading arm	Z 577 – 04.00.00	1
30	Loading arm pin II	Z 577 – 00.00.22	1
31	Loading arm lock pin	Z 577 – 00.00.28	1
32	Loading arm pin I	Z 577 – 00.00.21	1
33	Bolt, M16x110 8,8 – B	PN/M – 82101	2
34	Nut, M8 5 – B	PN/M – 82175	3
35	Actuator mounting pin IV	Z577 – 00.00.26	1
36	Actuator mounting pin II	Z577 – 00.00.23	1
37	Cotter pin, 6.3x63 S-Zn	PN/M-82001	6
38	Actuator mounting pin III	Z577 – 00.00.25	1
39	Movable frame mounting pin	Z577 – 00.00.27	2
40	Directional control valve support	Z237 – 00.00.104	1
41	Bolt, M 8x25 5.8-B	PN/M – 82105	2
42	Plain washer Ø8.4	PN/M – 82005	3
43	Plain washer Ø37	PN/M – 82105	1
44	Nut, M36 8 – B	PN/M – 82175	1
45	Spring cotter pin Ø4	DIN 11024	1
46	Nut, M10 5 – B	PN/M – 82175	5
47	Grease nipple, M6x1	PN/M – 86002	2
48	Spacing bushing	Z577 – 00.00.85	1

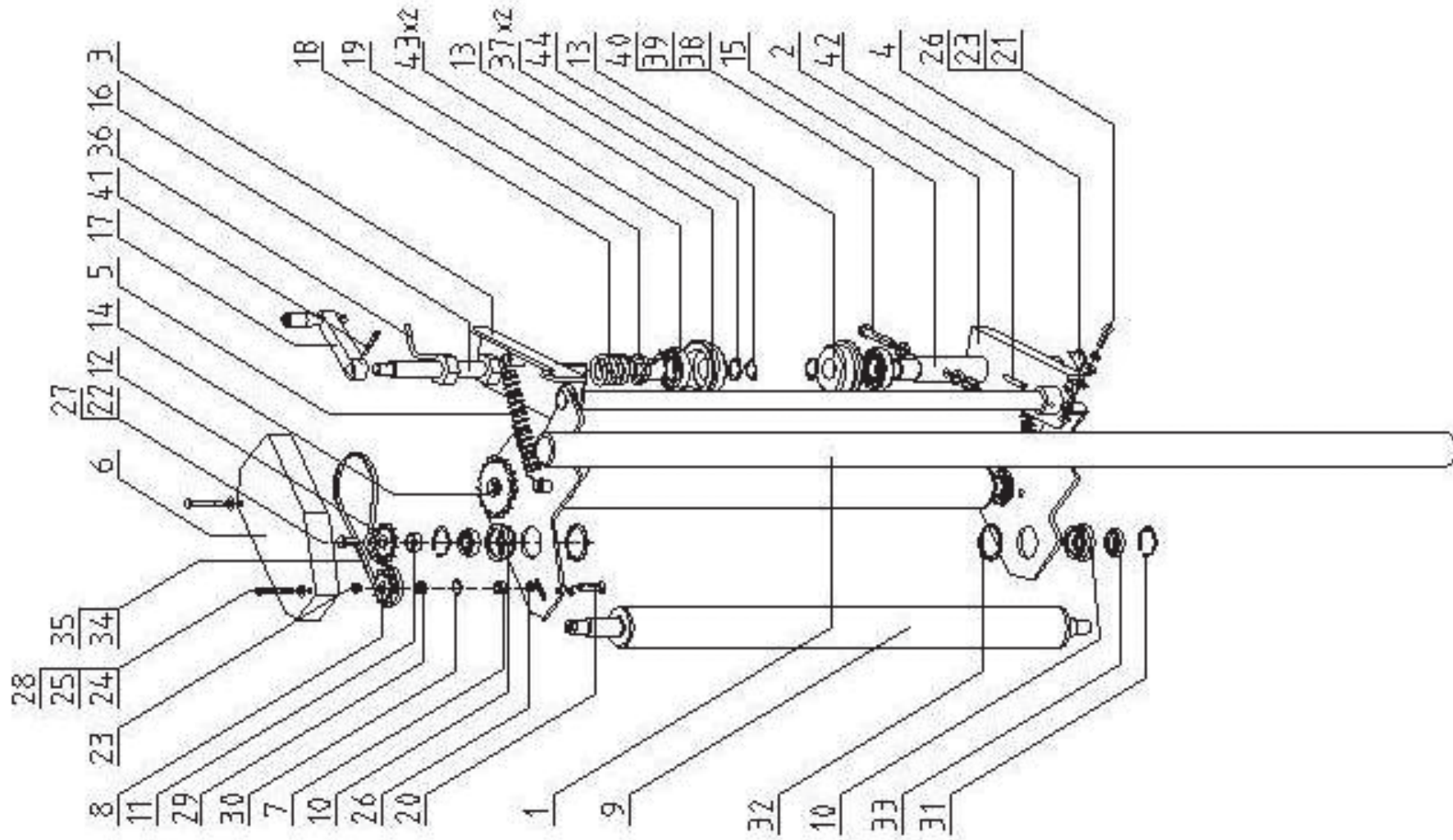
Lower frame, set - 2/2



LOWER FRAME, SET 3/3

No. in dwg	Assembly or part description	Drawing no. or standard	Quantity
49	Plain washer Ø31	PN/M – 82005	6
50	Bolt, M 8x35 5.8-B	PN/M – 82105	1
51	Farming chain Ø4	L = 650	1
52	Spring	Z237 – 00.00.40	1
53	Wire rope Ø4	Z237 – 00.42.00	1
54	Rope clamp Ø5	PN/M – 80241	1
55 *	Bale vertical positioning attachment frame	Z577 – 05.02.00	1
56	Nut, M12 5 – B	PN/M – 82175	4
57	Clamping ring	Z577 – 05.02.60	2

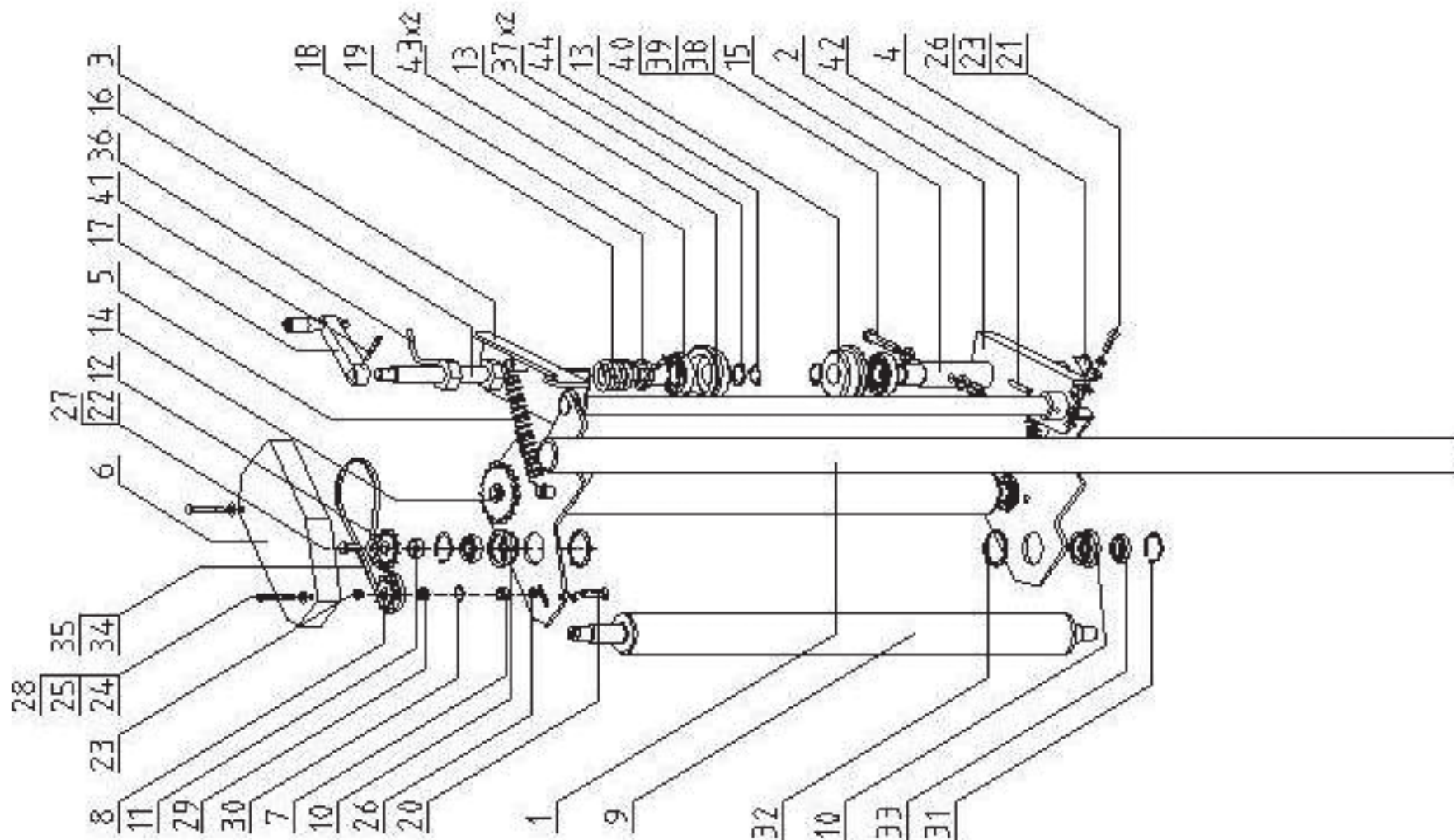
Wrapping film feeder, set



WRAPPING FILM FEEDER, SET 1/2

No. in dwg	Assembly or part description	Drawing no. or standard	Quantity
1	Mounting bracket	Z 237 – 02.01.00	1
2	Lower wrapping film bracket	Z 237 – 02.02.00	1
3	Upper wrapping film bracket	Z 237 – 02.03.00	1
4	Lock	Z 237 – 02.00.04	1
5	Spring I	Z 237 – 02.00.16	2
6	Cover	Z 237 – 02.06.00	1
7	Spacing bushing II	Z 237 – 02.00.08	1
8	Chain wheel, Z – 11	Z 560 – 02.00.09	1
9	Complete stretcher roll	Z 560 – 02.24.00	2
10	Roll holder	Z 560 – 02.00.25	4
11	Spacing bushing III	Z 560 – 02.00.26	2
12	Chain wheel, Z – 12	Z 560 – 02.00.30	1
13	Film pressure element	Z 560 – 02.00.41/I	2
14	Chain wheel, Z – 21	Z 560 – 02.00.32	1
15	Lower roll	Z 560 – 02.00.35/I	1
16	Adjusting screw	Z 560 – 02.36.00/I	1
17	Complete handle	Z 560 – 02.37.00	1
18	Spring II	Z 560 – 02.00.14	1
19	Bushing	Z 560 – 02.00.31	1
20	Bolt, M8x40 5.8 – B	PN/M – 82406	1
21	Bolt, M8x30 5.8 – B	PN/M – 82105	1
22	Bolt, M10x25 5.8 – B	PN/M – 82105	2
23	Nut, M8 5 – B	PN/M – 82175	2
25	Bolt, M6x70 5.8 – B	PN/M – 82101	2

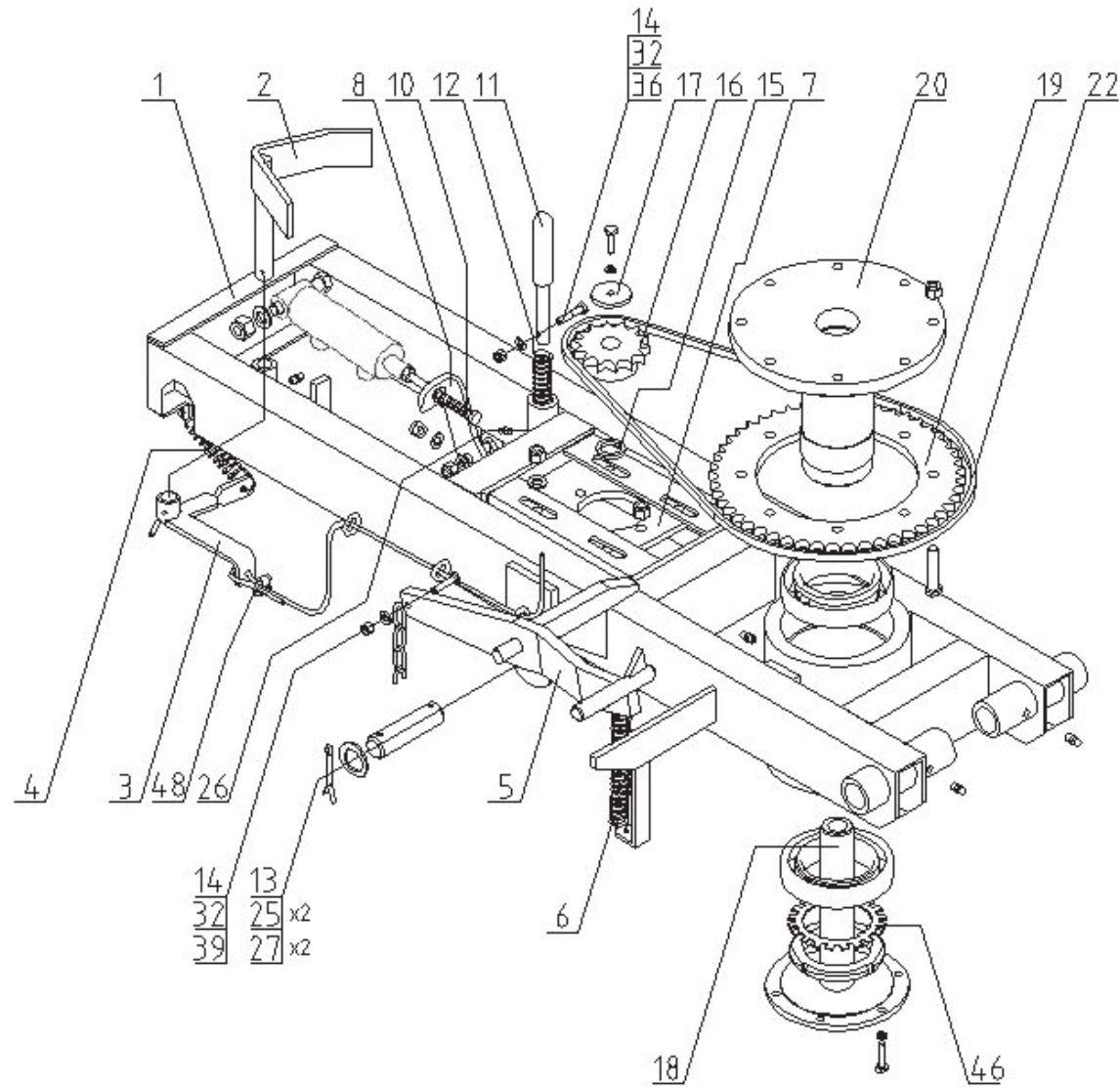
Wrapping film feeder, set



WRAPPING FILM FEEDER, SET 2/2

No. in dwg	Assembly or part description	Drawing no. or standard	Quantity
24	Nut, M6 5 – B	PN/M – 82175	2
26	Plain washer Ø8.4	PN/M – 82005	3
27	Plain washer Ø10.5	PN/M – 82030	2
28	Plain washer Ø 6.5	PN/M – 82030	2
29	Bearing, 608Z	PN/M – 86100	1
30	Spring ring, W – 22	PN/M – 85111	1
31	Spring ring, W – 42	PN/M – 85111	4
32	Spring ring, Z – 50	PN/M – 85111	4
33	Bearing, 6004 RS	PN/M – 86100	4
34	Roller chain, 08B 1/2”	PN/M – 84168	1
35	Fastening link, 08B	PN/M – 84168	1
36	Locknut, M27	Z 560 – 02.38.00	1
37	Spring ring, Z – 30	PN/M – 85111	2
38	Bolt M12x70 5.8 – B	PN/M – 82101	1
39	Nut, M12 5 – B	PN/M – 82175	1
40	Plain washer Ø13	PN/M – 82005	2
41	Spring pin, 6x45	PN/M – 85023	1
42	Spring pin, 8x50	PN/M – 85023	1
43	Bearing, 6206 RS	PN/M – 86100	2
44	Spring ring, Z – 20	PN/M – 85111	1

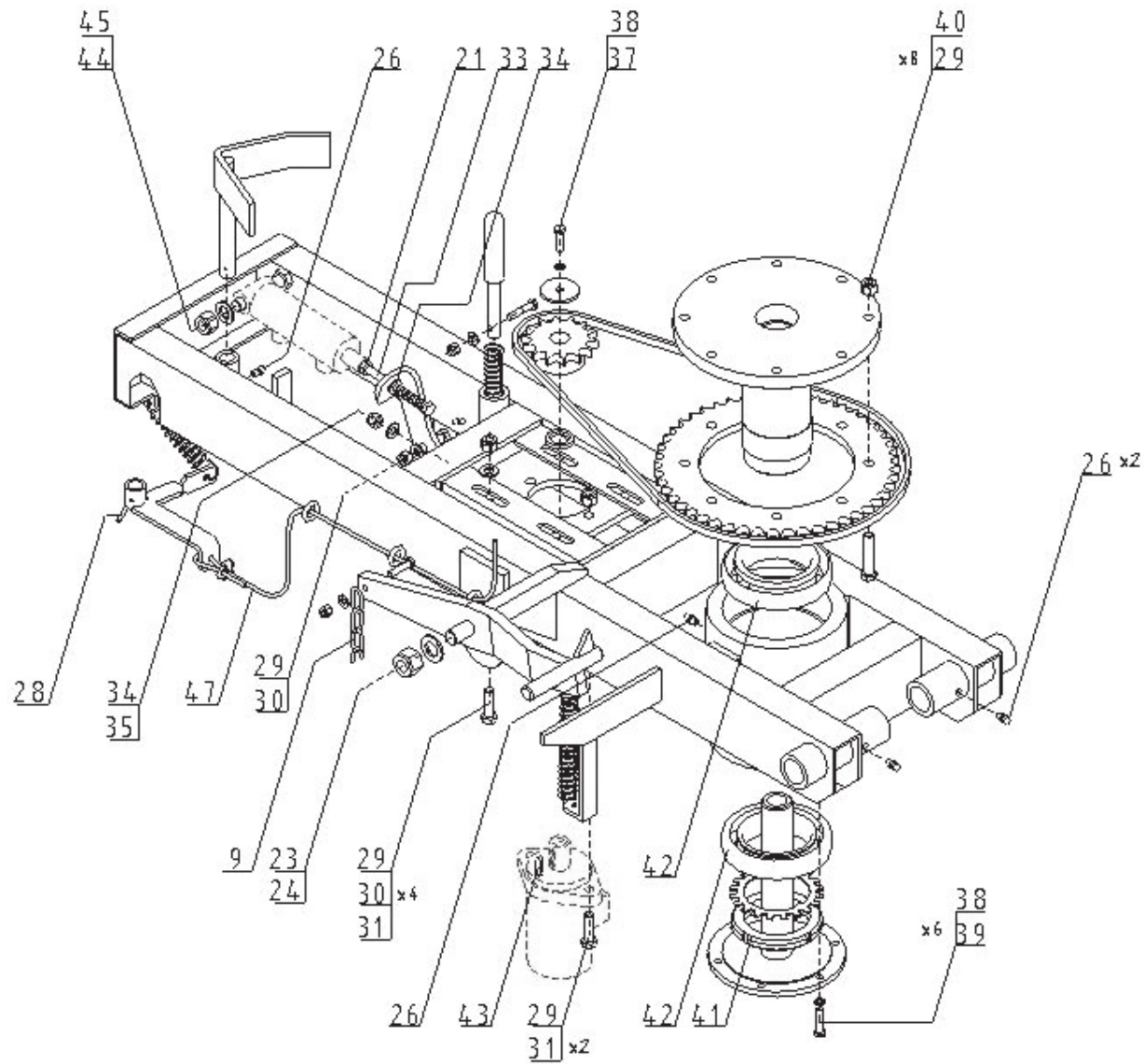
Movable frame, set -1/2



MOVABLE FRAME, SET 1/2

No. in dwg	Assembly or part description	Drawing no. or standard	Quantity
1	Movable frame	Z 577 – 02.00.00	1
2	Lever I	Z 577 – 00.04.00	1
3	Lever II	Z 577 – 00.05.00	1
4	Spring	Z 237 – 00.00.40	1
5	Complete lever	Z 577 – 03.04.00	1
6	Spring	Z 237 – 00.00.41	1
7	Engine support	Z 577 – 00.10.00	1
8	Lever III	Z 237 – 00.00.06	1
9	Farming chain Ø4	L = 650	1
10	Spring II	Z 237 – 00.00.09	1
11	Lock pin	Z 237 – 00.00.07	1
12	Spring III	Z 237 – 00.00.08	1
13	Actuator mounting pin II	Z 577 – 00.00.24	1
14	Plain washer Ø8.4	PN/M – 82005	2
15	Spacing washer	Z 237 – 00.00.11	1
16	Chain wheel, Z – 14 ¾"	Z 237 – 00.00.12	1
17	Special washer	Z 237 – 00.00.13	1
18	Sleeve axle	Z 237 – 00.16.00	1
19	Chain wheel, Z – 50 ¾"	Z 237 – 00.00.14	1
20	Sleeve pin	Z 237 – 00.15.00	1
21	Nut, M10 5 – B	PN/M – 82144	1
22	Chain 12B ¾"	PN/M – 84168	1
23	Plain washer Ø21	PN/M – 82005	1
24	Nut, M20 5 – B	PN/M – 82175	1

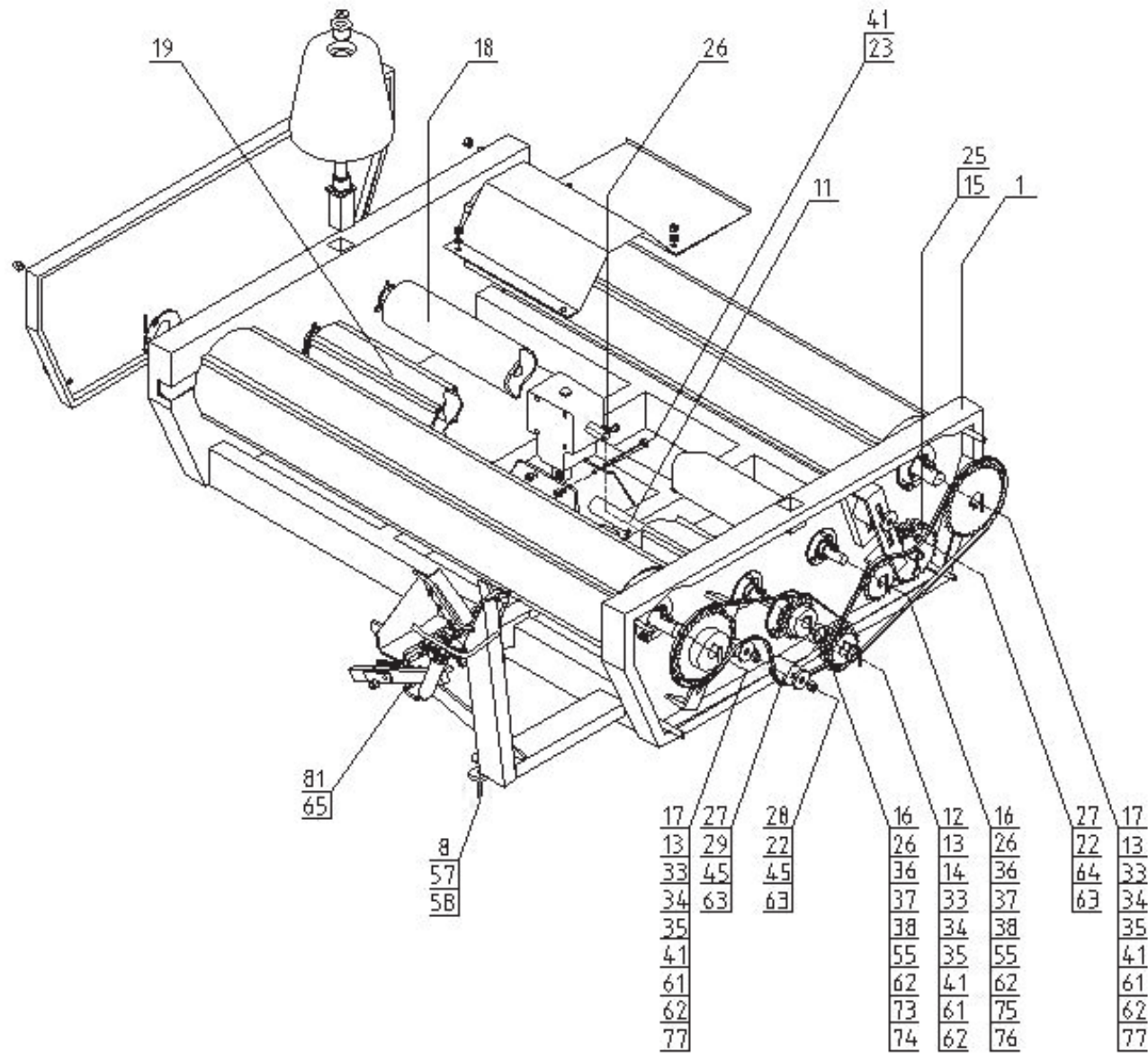
Movable frame, set - 2/2



MOVABLE FRAME, SET 2/2

No. in dwg	Assembly or part description	Drawing no. or standard	Quantity
25	Cotter pin, 6.3x63 S Zn	PN/M – 82001	2
26	Grease nipple, M10x1	PN/M – 86002	5
27	Plain washer Ø31	PN/M – 82005	2
28	Spring pin, 5x40	PN/M – 85023	1
29	Nut, M12 5 – B	PN/M – 82175	15
30	Plain washer Ø13	PN/M – 82005	5
31	Bolt, M12x40 8.8 – B	PN/M – 82105	6
32	Nut, M8 5 – B	PN/M – 82175	2
33	Bolt, M10x130 5.8 – B	PN/M – 82101	1
34	Plain washer Ø10.5	PN/M – 82005	2
35	Nut, M10 5 – B	PN/M – 82175	1
36	Bolt, M 8x40 5.8 – B	PN/M – 82105	1
37	Bolt, M 8x30 5.8 – B	PN/M – 82105	1
38	Spring washer Ø8.2	PN/M – 82008	7
39	Bolt, M 8x35 5.8 – B	PN/M – 82105	7
40	Bolt, M12x60 8.8 – B	PN/M – 82105	8
41	Bearing nut, KM17	PN/M – 86478	1
42	Bearing, 32018XA	PN/M – 86220	2
43	Parallel key, A8x7x25	PN/M – 85005	1
44	Nut, M16 5 – B	PN/M – 82175	1
45	Plain washer Ø17	PN/M – 82005	1
46	Tooth washer, MB17	PN/M – 82005	1
47	Wire rope Ø4	Z237 – 00.42.00	1
48	Rope clamp Ø5	PN/M – 80241	1

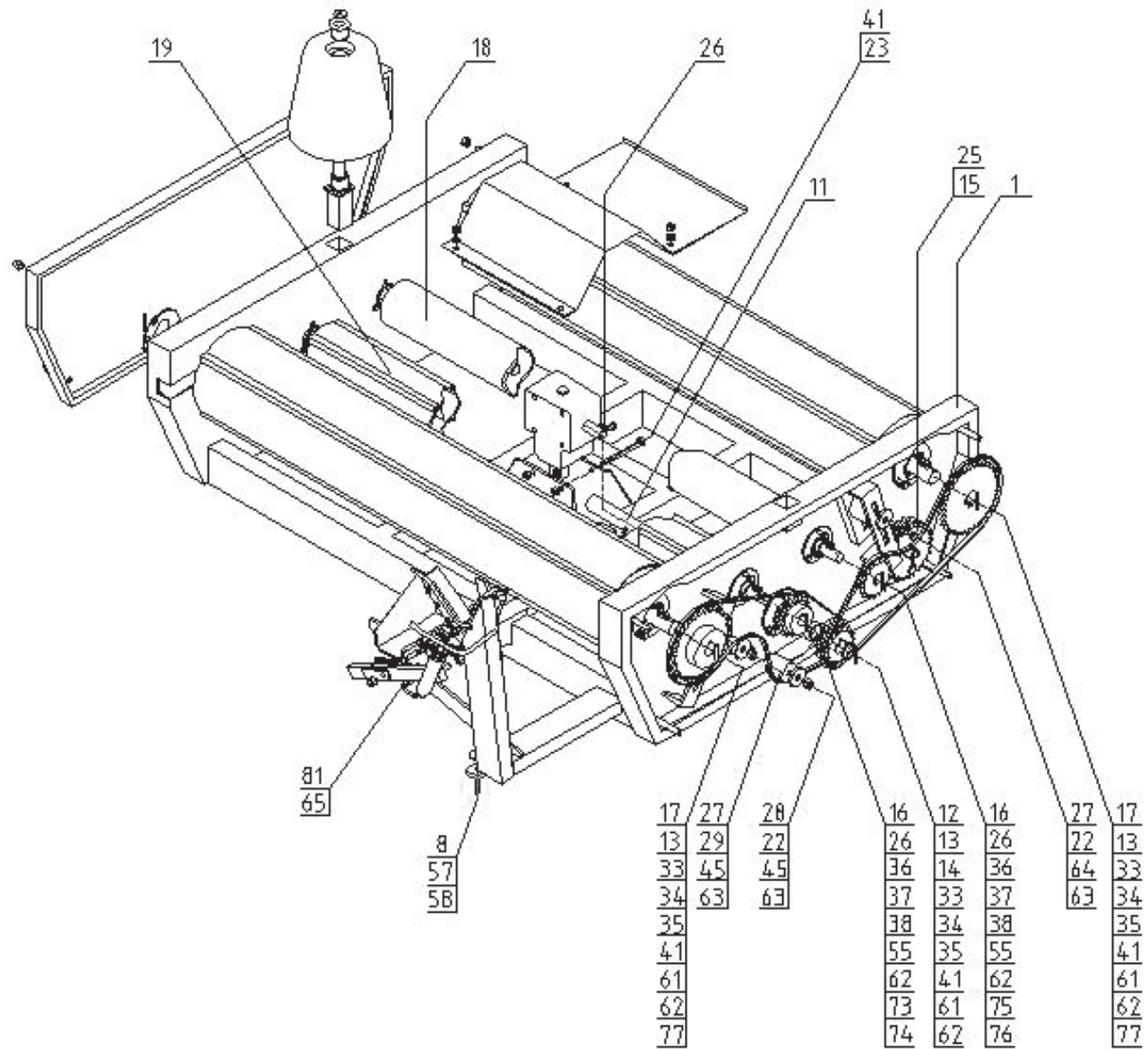
Rotary frame, set - 1/3



ROTARY FRAME, SET 1/4

No. in dwg	Assembly or part description	Drawing no. or standard	Quantity
1	Welded frame	Z 577 – 03.01.00	1
2	Latch	Z 577 – 03.02.01	1
3	Complete rod tube	Z 237 – 03.03.01	1
4	Initial pressure element	Z 577 – 03.17.08	1
5	Spring	Z 237 – 33.00.05	1
6	Cutter lever axle	Z 577 – 03.05.00	1
7	Cutter lever	Z 577 – 03.06.00	1
8	Revolution counter magnet	Ø32	1
9	Wheel console	Z 237 – 05.01.00	2
10	Bevel gear	Z 237 – 05.00.00	2
11	Wheel drive shaft, Z – 17	Z 237 – 33.00.11	1
12	Wheel, Z – 17	Z 237 – 33.00.12	1
13	Spacing bushing	Z 237 – 33.00.13	3
14	Washer I	Z 237 – 33.00.14	1
15	Wheel, Z – 27	Z 237 – 33.00.15	1
16	Wheel, Z – 19	Z 237 – 33.00.16	2
17	Wheel, Z – 37	Z 237 – 33.17.00	2
18	Thin shaft I	Z 237 – 33.18.00	1
19	Thin shaft II	Z 237 – 33.19.00	1
20	Thick shaft I	Z 237 – 33.20.00	1
21	Thick shaft II	Z 237 – 33.21.00	1
22	Bolt, M12x90 5.8 – B	PN/M – 82101	2

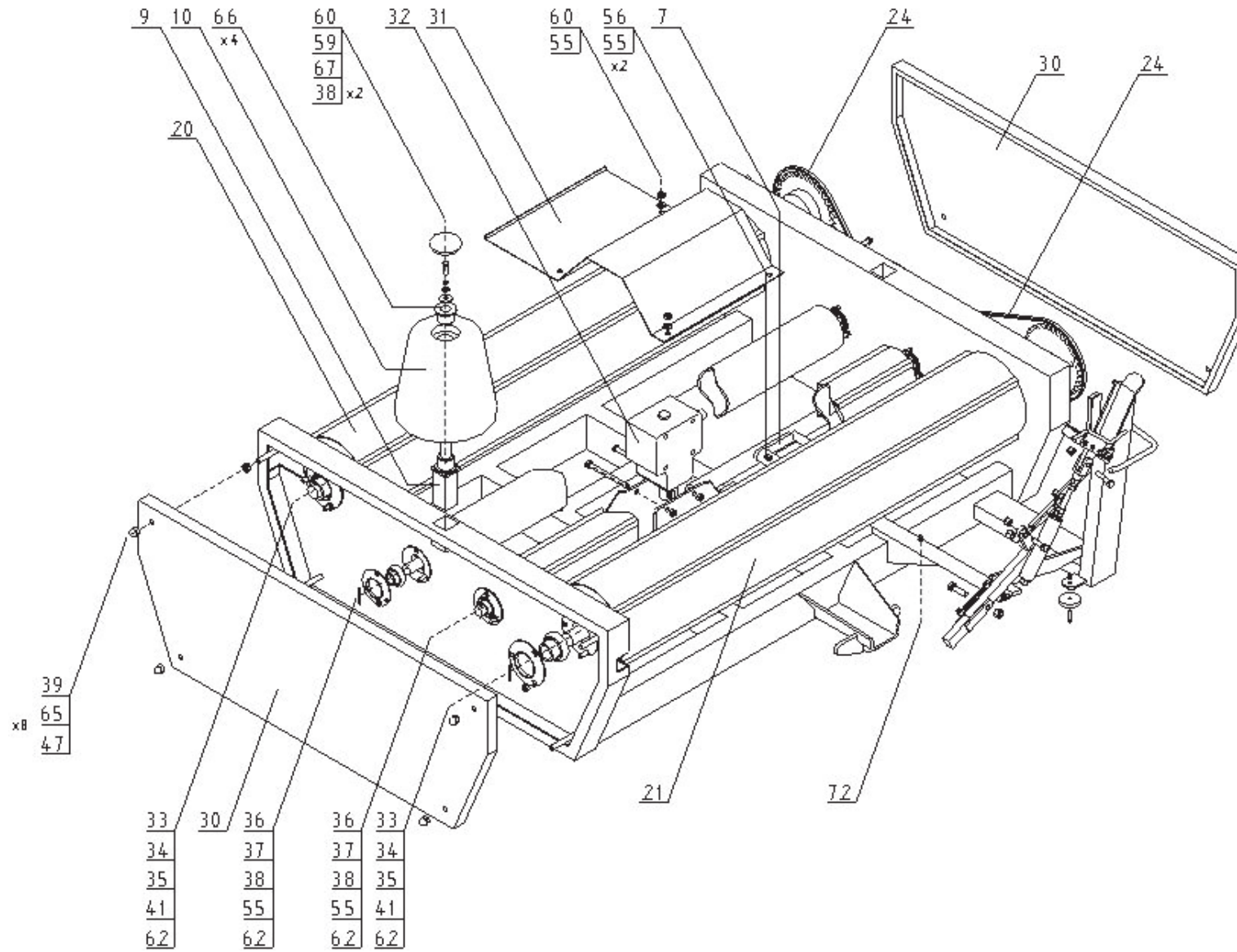
Rotary frame, set - 1/3



ROTARY FRAME, SET 2/4

No. in dwg	Assembly or part description	Drawing no. or standard	Quantity
23	Bolt, M12x120 5.8 – B	PN/M – 82101	4
24	Chain, 10 – B	PN/M – 84168	2
25	Cotter pin, 6.3x63 S – Zn	PN/M – 82001	1
26	Parallel key, A8x7x25	PN/M – 85005	3
27	Chain tensioner II	Z 237 – 33.00.27	2
28	Chain tensioner II	Z 237 – 33.00.28	1
29	Bolt, M12x100 5.8 – B	PN/M – 82101	1
30	Side guard	Z 237 – 33.00.30	2
31	Gearbox guard	Z 237 – 33.00.31	1
32	Bevel gear	1.9:1	1
33	Bearing, UC 207 RS	PN/M – 86120	5
34	Flanged holder, P – 207	PN ISO 3228:1996	10
35	Bolt, M10x25 5.8 – B	PN/M – 82105	15
36	Bearing, UC 205	PN/M – 86120	4
37	Flanged holder, P – 205	PN ISO 3228:1996	8
38	Bolt, M8x25 5.8 – B	PN/M – 82105	15
39	Nut, M12 5 – B	PN/M – 82181	8
40	Bolt, M10x45 5.8 – B	PN/M – 82105	1
41	Nut, M10 5 – B	PN/M – 82175	23
42	Rod eye	Z 577 – 03.03.02	1
43	Rod	Z 577 – 03.17.05	1
44	Nut, M14 5 – B	PN/M – 82144	2
45	Nut, M12 5 – B	PN/M – 82175	3
46	Spring	Z 237 – 33.03.04	1

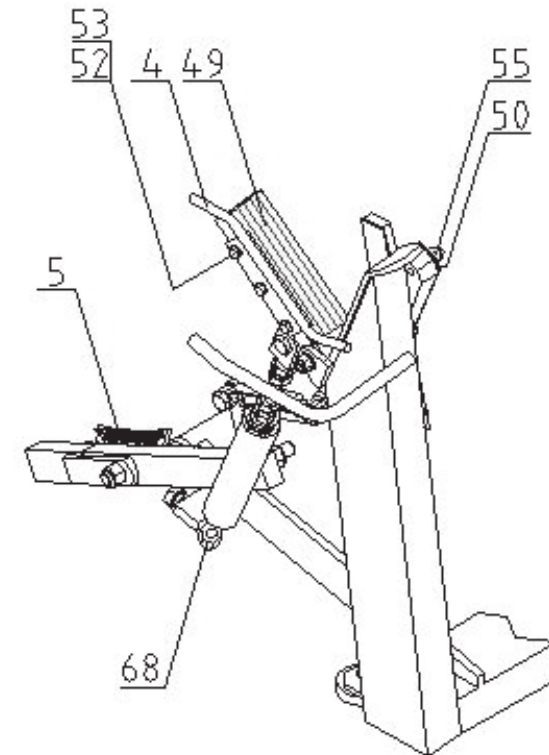
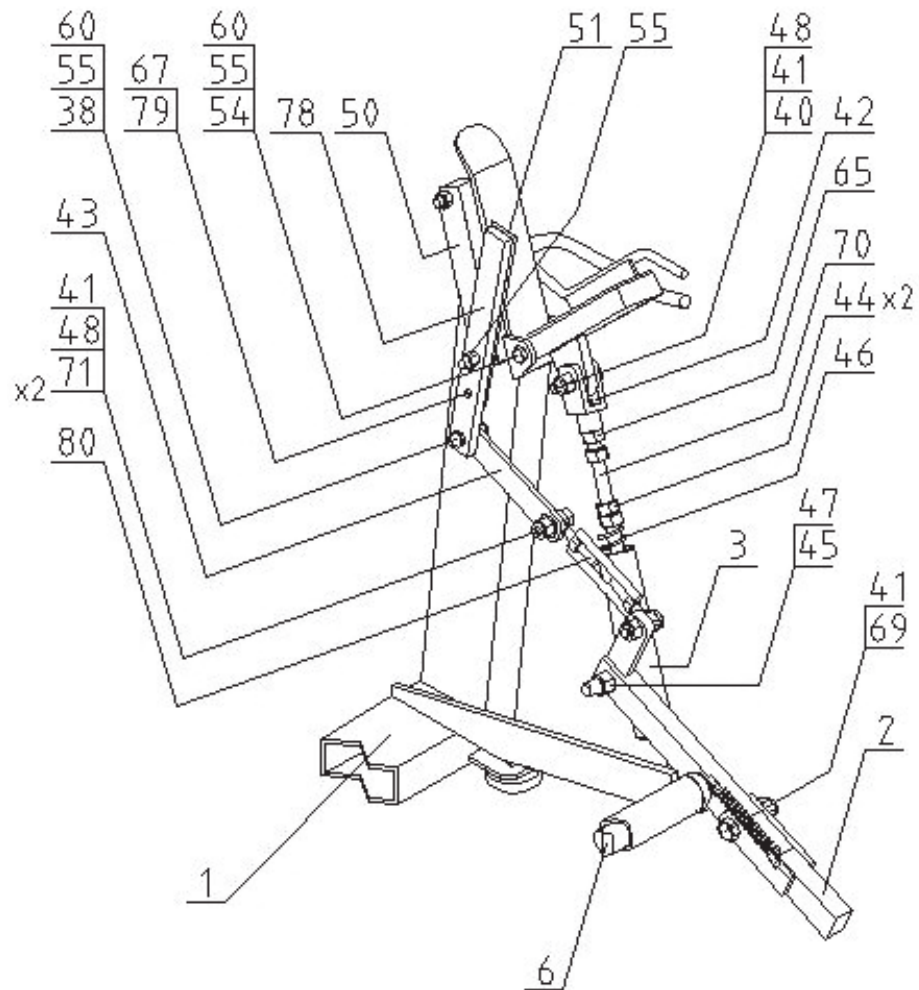
Rotary frame, set - 2/3



ROTARY FRAME, SET 3/4

No. in dwg	Assembly or part description	Drawing no. or standard	Quantity
47	Plain washer Ø13	PN/M – 82005	9
48	Plain washer Ø10.5	PN/M – 82005	3
49	Clamp	Z 577 – 03.17.03	1
50	Fixed cutter	Z 577 – 03.17.04	1
51	Movable cutter	Z 577 – 03.17.04	1
52	Bolt, M6x20 5.8 – B	PN/M – 82117	3
53	Spring washer Ø6.1	PN/M – 82008	3
54	Bolt, M8x70 5.8 – B	PN/M – 82101	1
55	Nut, M8 5 – B	PN/M – 82175	22
56	Bolt, M8x45 5.8 – B	PN/M – 82105	2
57	Screw, M6x25 3.6 – B	PN/M – 82209	1
58	Nut, M6 5 – B	PN/M – 82175	1
59	Plain washer Ø10.5	PN/M – 82030	2
60	Plain washer Ø8.4	PN/M – 82005	8
61	Parallel key, A10x8x35	PN/M – 85005	3
62	Spring pin, 6x50	PN/M – 85023	9
63	Special washer	G = 5 x 013/050	5
64	Threaded block, M12	Z 237 – 33.00.32	1
65	Nut, M12 5 – B	PN/M – 82144	10
66	Bevel gear hub	Z 237 – 05.00.04	4
67	Spring washer Ø8.2	PN/M – 82008	3
68	Nut, M14 5 – B	PN/M – 82175	1
69	Bolt, M10x60 5.8 – B	PN/M – 82105	1
70	Special bolt, M14	Z 577 – 03.03.03	1

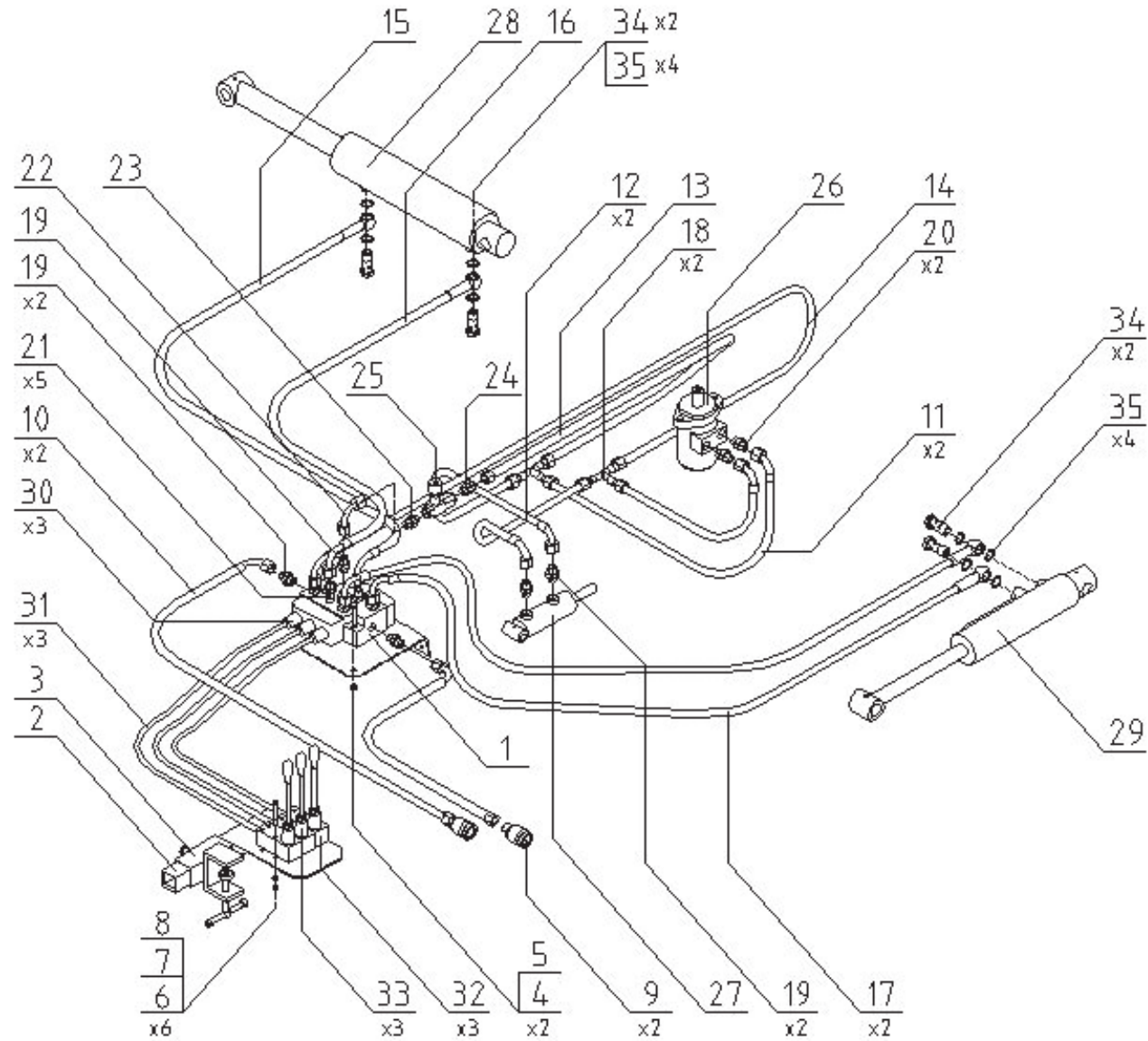
Rotary frame, set - 3/3 Film cutter



ROTARY FRAME, SET 4/4

No. in dwg	Assembly or part description	Drawing no. or standard	Quantity
71	Bolt, M10x35 5.8 – B	PN/M – 82105	2
72	Grease nipple, M6x1	PN/M – 86002	1
73	Washer II	Z 237 – 33.00.22	1
74	Washer III	Z 237 – 33.00.23	1
75	Washer IV	Z 237 – 33.00.24	1
76	Washer V	Z 237 – 33.00.25	1
77	Washer VI	Z 237 – 33.00.26	2
78	Movable cutter holder	Z 577 – 03.17.04	1
79	Bolt, M8x12 5.8 – B	PN/M – 82105	1
80	Tensioning bolt, M8	DIN 1480	1
81	Bolt, M12x40 5.8 – B	PN/M – 82105	1

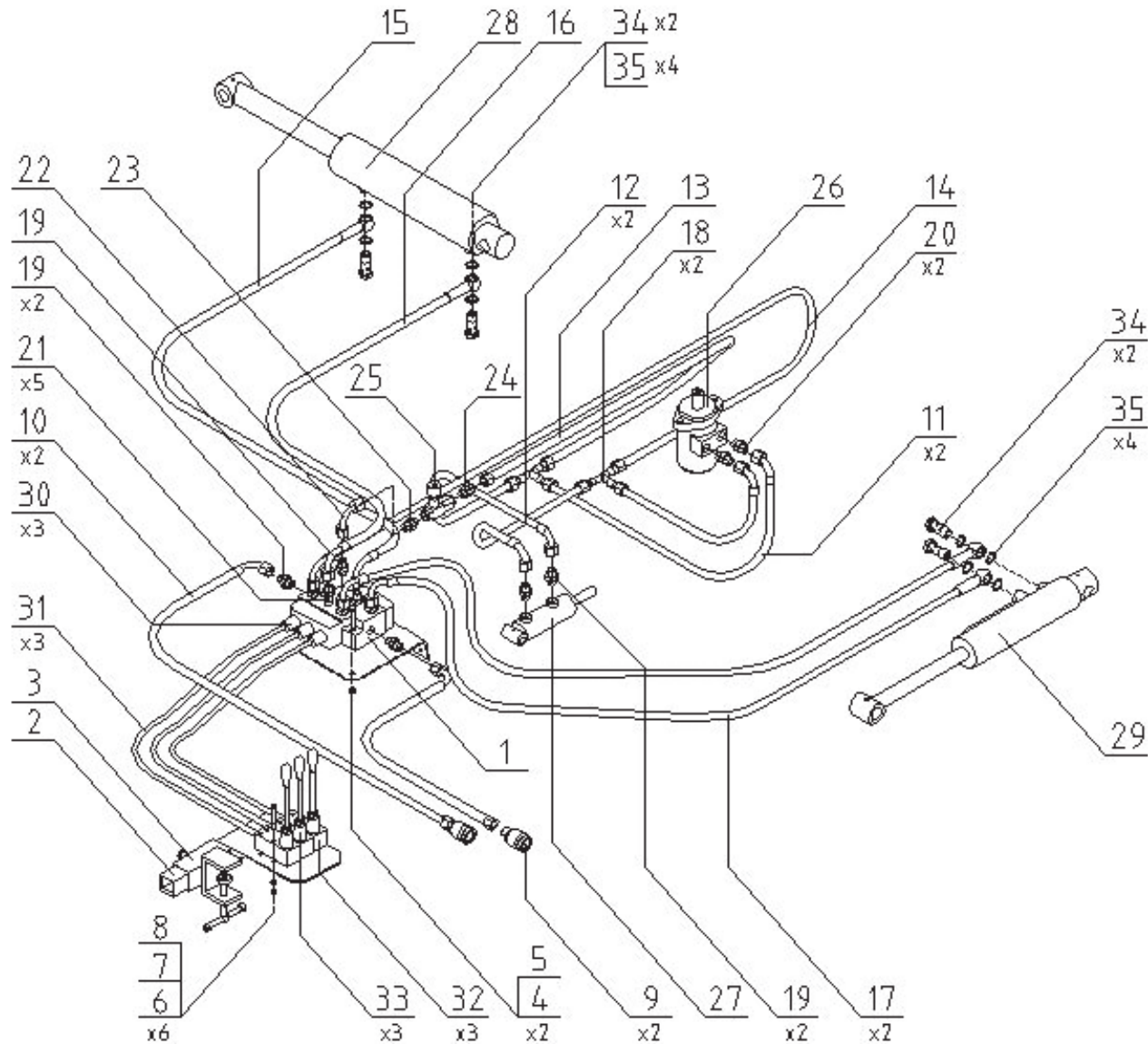
Hydraulic system, set



HYDRAULIC SYSTEM 1/2

No. in dwg	Assembly or part description	Drawing no. or standard	Quantity
1	Hydraulic control unit 3 – sectional unit, M16x1.5	MD3	1
2	Control bracket	Z 577 – 00.52.00	1
3	Control bracket handle	Z 577 – 00.53.00	1
4	Bolt, M8x50 5.8 – B	PN/M – 82101	2
5	Nut, M8 5 – B	PN/M – 82175	2
6	Bolt, M6x60 5.8 – B	PN/M – 82101	6
7	Nut, M6 5 – B	PN/M – 82175	6
8	Plain washer Ø6.4	PN/M – 82005	6
9	Valve – plug, quick-release coupling, M22x1.5	ZSR6 – 160 – 13/200	2
10	Hydraulic line	P12/P11 L = 2000 M18x1.5/M22x1.5	2
11	Hydraulic line	P12/P11 L = 700 M16x1.5/M16x1.5	2
12	Hydraulic line	P12/P11 L = 300 M16x1.5/M16x1.5	2
13	Hydraulic line	P11/P11 L = 2700 M16x1.5/M16x1.5	1
14	Hydraulic line	P12/P11 L = 2800 M16x1.5/M16x1.5	1
15	Hydraulic line	P12/P0 L = 2350 M16x1.5/M16x1.5	1
16	Hydraulic line	P12/P0 L = 2650 M16x1.5/M16x1.5	1
17	Hydraulic line	P12/P0 L = 2300 M16x1.5/M16x1.5	2
18	Coupling body – T-connection, M16x1.5	PN/M -73147	2
19	Stud body – straight, M16x1.5/18x1.5	PN/M -73140	5
20	Stud body – straight, M16x1.5/16x1.5	PN/M -73141	2
21	Stud body – straight, M16x1.5/16x1.5	PN/M -73141	5
22	Tube elbow <90° M16x1.5/18x1.5	ZN/142	1
23	Stud body – straight, M18x1.5 3/8"	ZN/140	1
24	Stud body – straight, M16x1.5 3/8"	ZN/140	1

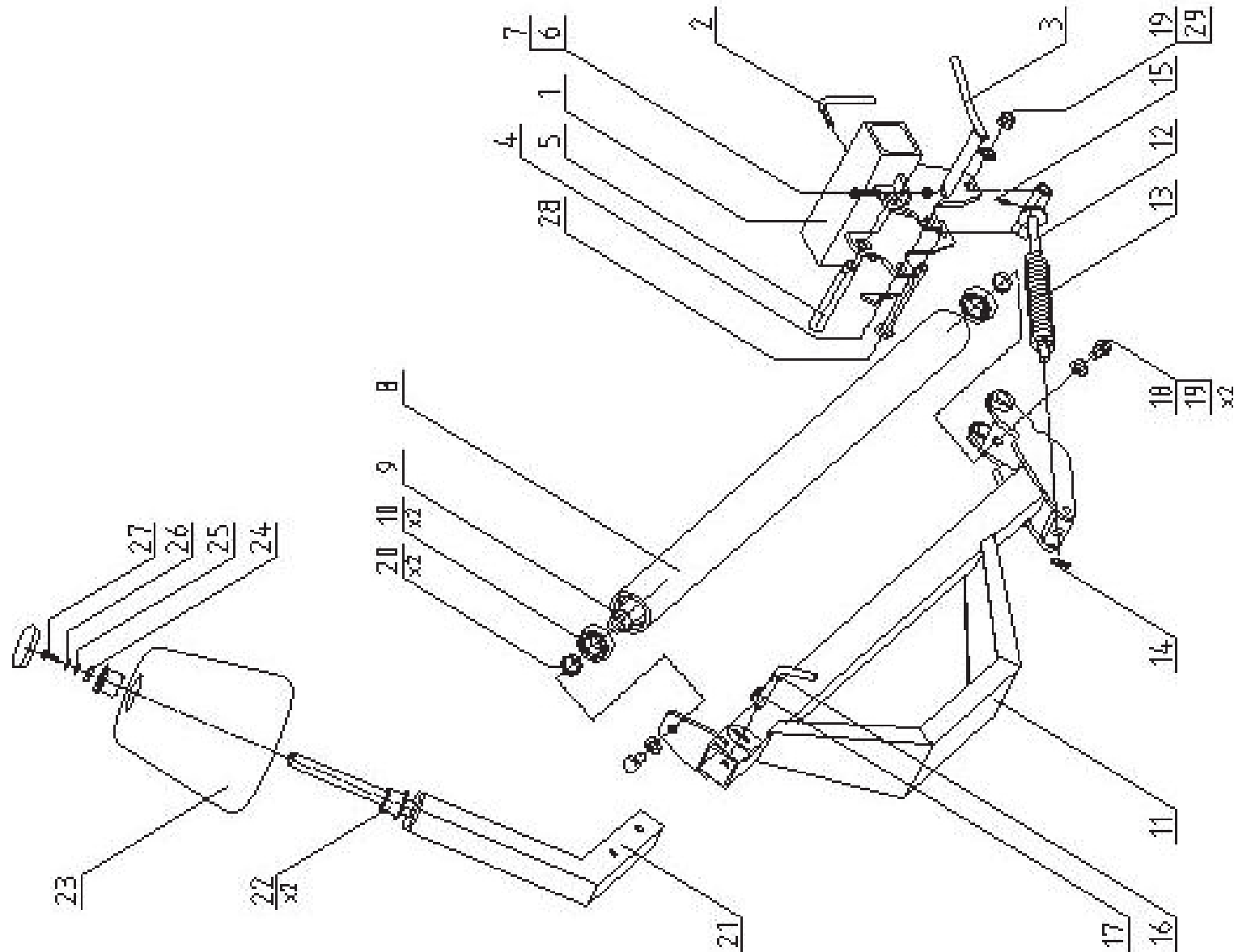
Hydraulic system, set



HYDRAULIC SYSTEM 2/2

No. in dwg	Assembly or part description	Drawing no. or standard	Quantity
25	Throttle-check valve	3/8" VRFU 380SP1 – 4N	1
26	Hydraulic motor	B6200NC25	1
27	Hydraulic piston cylinder	CJ – S227 – 40/20/60	1
28	Hydraulic piston cylinder	CJ – S409 – 80/50/227	1
29	Hydraulic piston cylinder	CJ – S422 – 63/32/200	1
30	Steering cable mounting kit		3
31	Steering cable	L = 2500	3
32	Control lever mounting kit		3
33	Complete control lever		3
34	Hydraulic system bolt, M18x1.5		4
35	Plain washer, Ø18 Cu		8

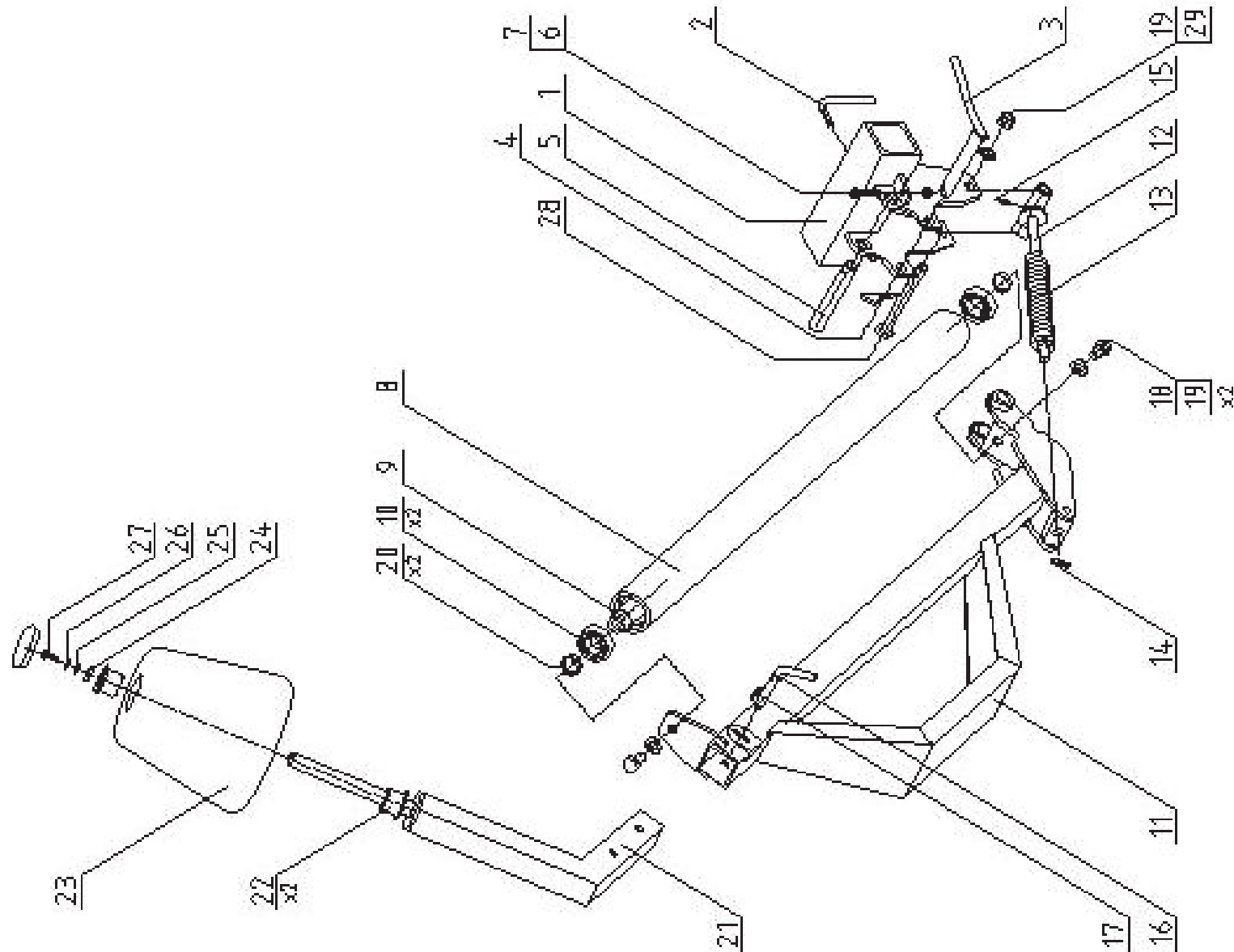
Attachment for vertical bale positioning (*)



ATTACHMENT FOR VERTICAL BALE POSITIONING 1/2

No. in dwg	Assembly or part description	Drawing no. or standard	Quantity
1	Slider	Z 577 – 05.03.00	1
2	Lock	Z 577 – 05.03.80	1
3	Lock pin	Z 577 – 05.03.50	1
4	Spring cotter pin Ø4	DIN 11024	1
5	Pin	Z577 – 05.03.70	1
6	Bolt, M 8x50 5.8 – B	PN/M – 82101	1
7	Nut, M8 5 – B	PN/M – 82175	1
8	Tube	Z577 – 05.01.11	1
9	Axle	Z577 – 05.01.12	1
10	Bearing	6206 2ZR	2
11	Bale vertical positioning arm	Z577 – 05.01.20	1
12	Rest	Z577 – 05.01.60	1
13	Spring	Z577 – 05.01.62	1
14	Spring pin, 8x32	PN/M-85023	1
15	Grease nipple, M6x1	PN/M-86002	1
16	Pin	Z577 – 05.01.70	1
17	Spring pin, 6x30	PN/M-85023	1
18	Bolt, M16x30 8.8-B	PN/M – 82105	2
19	Plain washer, 17	PN/M – 82005	3
20	Spacing bushing	Z577 – 05.01.80	2
21	Resistance wheel bracket	Z577 – 05.04.10	1
22	Wheel hub	Z237 – 05.00.04/1	2
23	Bevel gear	PCV	1
24	Plain washer, 10.5	PN/M – 82030	1

Attachment for vertical bale positioning (*)



ATTACHMENT FOR VERTICAL BALE POSITIONING 2/2

No. in dwg	Assembly or part description	Drawing no. or standard	Quantity
25	Plain washer, 8.4	PN/M – 82005	1
26	Spring washer, 8.2	PN/M – 82008	1
27	Bolt, M 8x25 5.8 – B	PN/M – 82105	1
28	Bolt, M16x140 8.8 – B	PN/M – 82101	1
29	Nut, M16 5 – B	PN/M – 82175	1